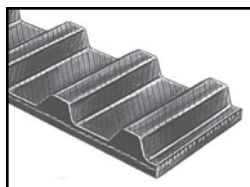




SYNCHRONOUS BELTS



Standard Timing Belts - XL, L, H, XH, XXH Trapezoidal Tooth Profile (Oil, Heat and Abrasion Resistant)

Stock timing belts are listed below. They have fiberglass tension members, chloroprene body with nylon covered teeth, all bonded together for maximum strength.

For non-stock widths, Jason cuts specified widths from our large supply of timing belt sleeves on special order.

Any width available from stock, consult Jason/Megadyne for pricing.

Mini-pitch MXL (0.080-inch pitch) timing belts are also available.

Pitch Code	Tooth Pitch (inch)		Width Codes (inch)											Pitch Lengths
			1/4	5/16	3/8	1/2	3/4	1	1.5	2	3	4	5	
XL	1/5	0.20	025	031	037	-	-	-	-	-	-	-	-	54XL thru 1280 XL
L	3/8	0.375	-	-	-	050	075	100	-	-	-	-	-	124 L thru 817 L
H	1/2	0.50	-	-	-	-	075	100	150	200	300	-	-	210 H thru 2360 H
XH	7/8	0.875	-	-	-	-	-	-	-	200	300	400	-	507 XH thru 1750 XH
XXH	1-1/4	1.25	-	-	-	-	-	-	-	200	300	400	500	700 XXH thru 1800 XXH

NOTE: Widths shown are considered standard, but standard timing belts can be cut to any width desired.

Jason timing belts are specified by belt length in inches times 10, belt pitch code and a three-digit belt width code, which is the decimal inch-width multiplied by 100 - **Example: 240L075**

Features & Benefits

- **Fiberglass Tensile Cord** - High dimensional stability
- **Chloroprene Belt Body** - Oil, heat and ozone resistance; high tooth shear resistance
- **Nylon Tooth Cover** - Durability and wear resistance, increased power capacity

Construction

- Compound** - Chloroprene
- Cord** - Fiberglass
- Tooth Cover** - Nylon

PART NUMBER DESIGNATION

240L075

240 = 24.0" Pitch Length

L = 3/8" Tooth Pitch

075 = 3/4" Top Width

Applications - General Industry or drives requiring premium efficiency or synchronous applications such as business machines, conveyors, index drives, farm equipment, machine tools, hand power tools, floor care machines.

Engineering Standards - Conforms to ARPM standard IP-24

Recommended Pulleys - Use pulleys made to ARPM standards

Special Constructions - MXL Mini-Pitch Construction

- Non-Marking Backing
- Red Latex Backing
- Special Compounds
- Non-Standard Widths
- Extra Backing
- Directional Lateral Tracking (S or Z Tensile members)

SYNCHRONOUS BELTS



SYNCHRONOUS BELTS

EXTRA LIGHT "XL" STANDARD 1/5" PITCH TIMING BELT

Belt Type	Pitch Length (in.)	Number of Teeth	Approx. Wt. (lbs.) 050 (1/2")	Approx. Wt. (lbs.) 075 (3/4")	Approx. Wt. (lbs.) 100 (1")	Belt Type	Pitch Length (in.)	Number of Teeth	Approx. Wt. (lbs.) 050 (1/2")	Approx. Wt. (lbs.) 075 (3/4")	Approx. Wt. (lbs.) 100 (1")
54XL	5.4	27	0.005	0.007	0.008	228XL	22.8	114	0.023	0.029	0.035
60XL	6.0	30	0.006	0.008	0.009	230XL	23.0	115	0.023	0.029	0.035
70XL	7.0	35	0.007	0.009	0.011	234XL	23.4	117	0.023	0.030	0.036
80XL	8.0	40	0.008	0.010	0.012	240XL	24.0	120	0.024	0.031	0.037
88XL	8.8	44	0.009	0.011	0.014	250XL	25.0	125	0.025	0.032	0.039
90XL	9.0	45	0.009	0.011	0.014	254XL	25.4	127	0.026	0.033	0.040
94XL	9.4	47	0.010	0.012	0.015	260XL	26.0	130	0.026	0.033	0.040
98XL	9.8	49	0.010	0.013	0.015	270XL	27.0	135	0.029	0.034	0.041
100XL	10.0	50	0.010	0.013	0.015	274XL	27.4	137	0.029	0.035	0.042
102XL	10.2	51	0.010	0.013	0.015	276XL	27.6	138	0.029	0.035	0.042
106XL	10.6	53	0.011	0.013	0.016	280XL	28.0	140	0.029	0.036	0.043
110XL	11.0	55	0.011	0.014	0.017	290XL	29.0	145	0.029	0.038	0.045
120XL	12.0	60	0.012	0.015	0.019	310XL	31.0	155	0.031	0.039	0.047
128XL	12.8	64	0.013	0.016	0.020	316XL	31.6	158	0.032	0.040	0.048
130XL	13.0	65	0.013	0.016	0.020	320XL	32.0	160	0.032	0.041	0.049
134XL	13.4	67	0.013	0.017	0.020	322XL	32.2	161	0.032	0.041	0.049
136XL	13.6	68	0.014	0.018	0.021	330XL	33.0	165	0.033	0.042	0.050
140XL	14.0	70	0.014	0.018	0.022	340XL	34.0	170	0.034	0.042	0.051
142XL	14.2	71	0.014	0.018	0.023	344XL	34.4	172	0.034	0.043	0.051
150XL	15.0	75	0.015	0.019	0.023	348XL	34.8	174	0.035	0.044	0.053
156XL	15.6	78	0.016	0.020	0.024	350XL	35.0	175	0.035	0.044	0.053
160XL	16.0	80	0.016	0.020	0.025	352XL	35.2	176	0.035	0.044	0.053
162XL	16.2	81	0.016	0.021	0.026	364XL	36.4	182	0.036	0.046	0.055
170XL	17.0	85	0.017	0.022	0.026	380XL	38.0	190	0.038	0.048	0.058
180XL	18.0	90	0.018	0.023	0.028	390XL	39.0	195	0.039	0.049	0.059
182XL	18.2	91	0.018	0.023	0.028	392XL	39.2	196	0.039	0.049	0.059
188XL	18.8	94	0.019	0.024	0.029	412XL	41.2	206	0.040	0.051	0.061
190XL	19.0	95	0.019	0.024	0.029	414XL	41.4	207	0.041	0.051	0.062
194XL	19.4	97	0.020	0.025	0.030	434XL	43.4	217	0.043	0.054	0.064
200XL	20.0	100	0.020	0.025	0.031	450XL	45.0	225	0.045	0.058	0.069
210XL	21.0	105	0.021	0.026	0.032	460XL	46.0	230	0.046	0.059	0.070
214XL	21.4	107	0.021	0.027	0.033	490XL	49.0	245	0.049	0.061	0.073
220XL	22.0	110	0.022	0.028	0.034	1280XL	128.0	640	0.127	0.159	0.191

LIGHT "L" STANDARD 3/8" PITCH TIMING BELT

Belt Type	Pitch Length (in.)	Number of Teeth	Approx. Wt. (lbs.) 050 (1/2")	Approx. Wt. (lbs.) 075 (3/4")	Approx. Wt. (lbs.) 100 (1")	Belt Type	Pitch Length (in.)	Number of Teeth	Approx. Wt. (lbs.) 050 (1/2")	Approx. Wt. (lbs.) 075 (3/4")	Approx. Wt. (lbs.) 100 (1")
124L	12.4	33	0.06	0.05	0.07	345L	34.5	92	0.08	0.13	0.16
135L	13.5	36	0.06	0.05	0.07	367L	36.7	98	0.08	0.13	0.17
150L	15.0	40	0.03	0.05	0.07	375L	37.5	100	0.08	0.13	0.17
165L	16.5	44	0.03	0.06	0.08	390L	39.0	104	0.09	0.14	0.18
169L	16.9	45	0.03	0.06	0.08	405L	40.5	108	0.09	0.14	0.19
173L	17.3	46	0.03	0.06	0.08	420L	42.0	112	0.10	0.15	0.20
187L	18.7	50	0.04	0.07	0.09	424L	42.4	113	0.10	0.16	0.21
202L	20.2	54	0.04	0.08	0.09	427L	42.7	114	0.10	0.16	0.21
210L	21.0	56	0.04	0.08	0.09	450L	45.0	120	0.11	0.16	0.21
225L	22.5	60	0.05	0.08	0.10	480L	48.0	128	0.12	0.17	0.23
236L	23.6	63	0.06	0.08	0.12	510L	51.0	136	0.12	0.18	0.24
240L	24.0	64	0.06	0.08	0.12	525L	52.5	140	0.12	0.19	0.25
244L	24.4	65	0.06	0.08	0.12	540L	54.0	144	0.13	0.20	0.26
255L	25.5	68	0.06	0.09	0.12	548L	54.8	146	0.13	0.20	0.26
270L	27.0	72	0.06	0.10	0.13	581L	58.1	155	0.13	0.20	0.27
285L	28.5	76	0.07	0.10	0.14	600L	60.0	160	0.13	0.21	0.28
300L	30.0	80	0.07	0.11	0.14	660L	66.0	176	0.14	0.23	0.29
315L	31.5	84	0.07	0.12	0.15	728L	72.8	194	0.15	0.25	0.30
320L	32.0	85	0.07	0.12	0.15	731L	73.1	195	0.15	0.25	0.30
322L	32.2	86	0.07	0.12	0.15	817L	81.7	218	0.18	0.29	0.36

COTTON CLEANER BELTS



- For use on cotton gin cleaning machines
- 1" Tooth Pitch
- Chloroprene Rubber with steel cord
- Long service life in harsh environments

Belt Number	No. of Teeth	Belt Number	No. of Teeth
61CCB142	60	64CCB175	64
63CCB165	63	65CCB175	65



SYNCHRONOUS BELTS

HEAVY "H" STANDARD 1/2" PITCH TIMING BELT

Belt Type	Pitch Length (in.)	Number of Teeth	Approx. Weight (lbs.) 075 (3/4")	Approx. Weight (lbs.) 100 (1")	Approx. Weight (lbs.) 150 (1-1/2")	Approx. Weight (lbs.) 200 (2")	Approx. Weight (lbs.) 300 (3")
210H	21.0	42	0.11	0.15	0.23	0.30	0.45
230H	23.0	46	0.12	0.19	0.28	0.38	0.47
240H	24.0	48	0.13	0.20	0.28	0.41	0.56
255H	25.5	51	0.14	0.21	0.29	0.42	0.56
270H	27.0	54	0.15	0.21	0.31	0.43	0.63
280H	28.0	56	0.16	0.21	0.31	0.44	0.64
300H	30.0	60	0.17	0.23	0.35	0.47	0.70
310H	31.0	62	0.18	0.24	0.36	0.48	0.72
315H	31.5	63	0.18	0.24	0.36	0.49	0.73
320H	32.0	64	0.18	0.25	0.37	0.50	0.74
330H	33.0	66	0.19	0.25	0.38	0.51	0.77
340H	34.0	68	0.19	0.26	0.38	0.52	0.78
350H	35.0	70	0.20	0.27	0.40	0.55	0.82
360H	36.0	72	0.20	0.28	0.42	0.56	0.84
370H	37.0	74	0.21	0.28	0.42	0.57	0.86
375H	37.5	75	0.21	0.28	0.43	0.58	0.88
390H	39.0	78	0.22	0.30	0.45	0.61	0.91
400H	40.0	80	0.23	0.31	0.47	0.63	0.93
410H	41.0	82	0.23	0.31	0.48	0.64	0.96
420H	42.0	84	0.24	0.32	0.49	0.65	0.98
430H	43.0	86	0.24	0.33	0.50	0.67	0.99
450H	45.0	90	0.25	0.35	0.52	0.70	1.05
465H	46.5	93	0.26	0.36	0.55	0.71	1.09
480H	48.0	96	0.27	0.37	0.56	0.72	1.12
490H	49.0	98	0.27	0.38	0.57	0.75	1.15
510H	51.0	102	0.28	0.39	0.59	0.79	1.18
530H	53.0	106	0.29	0.40	0.61	0.82	1.20
540H	54.0	108	0.30	0.41	0.63	0.84	1.25
560H	56.0	112	0.31	0.42	0.64	0.85	1.26
570H	57.0	114	0.32	0.44	0.66	0.89	1.32
580H	58.0	116	0.33	0.45	0.68	0.91	1.30
585H	58.5	117	0.33	0.45	0.68	0.91	1.30
600H	60.0	120	0.34	0.46	0.70	0.93	1.40
630H	63.0	126	0.35	0.48	0.73	0.98	1.47
650H	65.0	130	0.36	0.50	0.76	1.00	1.50
660H	66.0	132	0.37	0.51	0.77	1.02	1.54
680H	68.0	136	0.38	0.52	0.79	1.06	1.59
700H	70.0	140	0.39	0.54	0.81	1.09	1.64
725H	72.5	145	0.41	0.56	0.84	1.12	1.75
730H	73.0	146	0.41	0.56	0.84	1.13	1.80
750H	75.0	150	0.42	0.58	0.87	1.16	1.87
770H	77.0	154	0.43	0.59	0.90	1.20	1.90
800H	80.0	160	0.45	0.61	0.93	1.24	1.93
810H	81.0	162	0.46	0.62	0.95	1.25	1.93
820H	82.0	164	0.46	0.63	0.96	1.27	1.94
840H	84.0	168	0.47	0.64	0.97	1.28	1.95
850H	85.0	170	0.48	0.65	0.99	1.32	1.99
860H	86.0	172	0.48	0.66	1.00	1.35	2.00
880H	88.0	176	0.50	0.67	1.03	1.37	2.00
900H	90.0	180	0.51	0.69	1.04	1.40	2.10
950H	95.0	190	0.53	0.72	1.10	1.47	2.16
1000H	100.0	200	0.56	0.77	1.16	1.55	2.32
1100H	110.0	220	0.59	0.84	1.27	1.71	2.57
1120H	112.0	224	0.60	0.85	1.30	1.73	2.59
1140H	114.0	228	0.65	0.90	1.40	1.80	2.62
1150H	115.0	230	0.70	0.95	1.45	1.92	2.90
1250H	125.0	250	0.70	0.96	1.46	1.94	2.92
1400H	140.0	280	0.79	1.07	1.62	2.17	3.24
1700H	170.0	340	0.95	1.30	1.95	2.63	3.95
2010H	201.0	402	1.13	1.53	2.30	3.10	4.67
2360H	236.0	472	1.33	1.80	2.70	3.65	5.48

EXTRA HEAVY "XH" STANDARD 7/8" PITCH TIMING BELT

Belt Type	Pitch Length (in.)	Number of Teeth	Approx. Wt. (lbs.) 200 (2")	Approx. Wt. (lbs.) 300 (3")	Approx. Wt. (lbs.) 400 (4")
507XH	50.7	58	2.11	3.16	4.22
560XH	56.0	64	2.33	3.49	4.66
630XH	63.0	72	2.62	3.93	5.24
700XH	70.0	80	2.91	4.37	5.82
770XH	70.0	88	3.20	4.81	6.41
840XH	70.0	96	3.49	5.25	6.99
980XH	70.0	112	4.08	6.12	8.15
1120XH	112.0	128	4.66	6.99	9.32
1260XH	126.0	144	5.24	7.86	10.48
1400XH	140.0	160	5.82	8.74	11.65
1540XH	154.0	176	6.41	9.61	12.81
1750XH	175.0	200	7.28	10.92	14.56

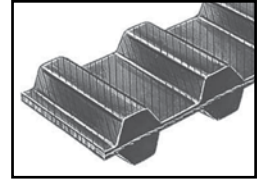
DOUBLE EXTRA HEAVY "XXH" STANDARD 1-1/4" PITCH TIMING BELT

Belt Type	Pitch Length (in.)	Number of Teeth	Approx. Wt. (lbs.) 200 (2")	Approx. Wt. (lbs.) 300 (3")	Approx. Wt. (lbs.) 400 (4")	Approx. Wt. (lbs.) 500 (5")
700XXH	70.0	56	4.09	6.13	8.18	10.22
800XXH	80.0	64	4.67	7.01	9.34	11.68
900XXH	90.0	72	5.26	7.88	10.51	13.14
1000XXH	100.0	80	5.84	8.76	11.68	14.50
1200XXH	120.0	96	7.01	10.51	14.60	17.52
1400XXH	140.0	112	8.18	12.26	16.35	20.44
1600XXH	160.0	128	9.34	14.02	18.69	23.36
1800XXH	180.0	144	10.57	15.77	21.02	26.28

SYNCHRONOUS BELTS



Double Sided Standard Timing Belts - DXL, DL, DH Trapezoidal Tooth Profile (Chloroprene with Fiberglass Reinforcing Cord)



Double sided belts afford power transmission from either side of the belt and are often used in reversing and serpentine applications.

Double sided timing belts are produced using the same materials as single sided belts, except that the backside is precision ground from a fiber-reinforced rubber compound. There is no nylon facing on the backside. Power take off from the backside is limited to 50% of the total Jason/Megadyne design manual rating.

Total belt rating is the same as for single sided belts.

Teeth with nylon cover should always be against the driver pulley.

Pitch Code	Tooth Pitch (inch)		Width Codes (inch)								Pitch Lengths
			1/4	3/8	1/2	3/4	1	1.5	2	3	
DXL	1/5	0.20	025	037	-	-	-	-	-	-	D60 XL thru D900 XL
DL	3/8	0.375	-	-	050	075	100	-	-	-	D124 L thru D817 L
DH	1/2	0.50	-	-	-	075	100	150	200	300	D240 H thru D1700 H

NOTE: Widths shown are considered standard, but Double Sided Standard Timing Belts can be cut to any width desired.

Double sided timing belts are specified the same way as single sided timing belts except with a "D" prefix -

Example: D240H100

Features & Benefits

- **Fiberglass Tensile Cord** - High dimensional stability
- **Chloroprene Belt Body** - Oil, heat and ozone resistance; high tooth shear resistance
- **Nylon Tooth Cover** - Durability and wear resistance, increased power capacity
- **Double Sided Timing Belts** - Serpentine drives, reverse rotation of driven shafts

PART NUMBER DESIGNATION

D240H100

D = Double sided tooth construction

240 = Pitch length in tenths of an inch = 24.0"

H = Tooth pitch = 0.5"

100 = Width code = 1 inch

Construction

Compound - Chloroprene

Cord - Fiberglass

Tooth Cover - Nylon

Applications - General Industry or drives requiring premium efficiency or synchronous applications such as business machines, conveyors, index drives, farm equipment, machine tools, hand power tools, floor care machines.

Engineering Standards - Conforms to ARPM standard IP-24

Recommended Pulleys - Use pulleys made to ARPM standards

Special Widths - Special widths are cut to order from our sleeve stock for fast delivery



SYNCHRONOUS BELTS

EXTRA LIGHT "XL" DOUBLE SIDED STANDARD 1/5" PITCH TIMING BELT

Belt Type	Pitch Length (in.)	Number of Teeth	Approx. Wt. (lbs.) 25 (1/4")	Approx. Wt. (lbs.) 37 (3/8")
D60XL	6.0	30	0.005	0.01
D70XL	7.0	35	0.005	0.01
D80XL	8.0	40	0.005	0.01
D90XL	9.0	45	0.005	0.01
D100XL	10.0	50	0.005	0.01
D110XL	11.0	55	0.01	0.01
D120XL	12.0	60	0.01	0.01
D130XL	13.0	65	0.01	0.02
D140XL	14.0	70	0.01	0.02
D150XL	15.0	75	0.01	0.02
D156XL	15.6	78	0.01	0.02
D160XL	16.0	80	0.01	0.02
D170XL	17.0	85	0.01	0.02
D180XL	18.0	90	0.02	0.02
D190XL	19.0	95	0.02	0.02
D200XL	20.0	100	0.02	0.02
D210XL	21.0	105	0.02	0.03
D220XL	22.0	110	0.02	0.03
D230XL	23.0	115	0.02	0.03
D240XL	24.0	120	0.02	0.03
D250XL	25.0	125	0.02	0.03
D260XL	26.0	130	0.02	0.03
D270XL	27.0	135	0.02	0.03
D280XL	28.0	140	0.03	0.04
D290XL	29.0	145	0.03	0.04
D300XL	30.0	150	0.03	0.04
D310XL	31.0	155	0.03	0.04
D330XL	33.0	165	0.03	0.04
D350XL	35.0	175	0.03	0.04
D362XL	36.2	181	0.03	0.05
D392XL	39.2	196	0.04	0.05
D450XL	45.0	225	0.04	0.05
D492XL	49.2	246	0.04	0.06
D690XL	69.0	345	0.06	0.09
D900XL	90.0	450	0.08	0.11

LIGHT "L" DOUBLE SIDED STANDARD 3/8" PITCH TIMING BELT

Belt Type	Pitch Length (in.)	Number of Teeth	Approx. Wt. (lbs.) 50 (1/2")	Approx. Wt. (lbs.) 75 (3/4")	Approx. Wt. (lbs.) 100 (1")
D124L	12.4	33	0.03	0.05	0.06
D150L	15.0	40	0.04	0.06	0.08
D165L	16.5	44	0.04	0.06	0.09
D173L	17.3	46	0.05	0.07	0.09
D187L	18.7	50	0.05	0.07	0.10
D202L	20.2	54	0.05	0.08	0.10
D210L	21.0	56	0.05	0.08	0.10
D225L	22.5	60	0.05	0.08	0.10
D240L	24.0	64	0.06	0.09	0.12
D255L	25.5	68	0.06	0.09	0.12
D270L	27.0	72	0.07	0.10	0.14
D285L	28.5	76	0.07	0.11	0.14
D300L	30.0	80	0.07	0.11	0.14
D320L	32.0	85	0.07	0.11	0.15
D322L	32.2	86	0.08	0.12	0.16
D345L	34.5	92	0.08	0.12	0.16
D367L	36.7	98	0.08	0.13	0.16
D390L	39.0	104	0.09	0.14	0.18
D420L	42.0	112	0.10	0.15	0.20
D450L	45.0	120	0.10	0.15	0.20
D480L	48.0	128	0.11	0.16	0.22
D510L	51.0	136	0.12	0.18	0.24
D540L	54.0	144	0.13	0.19	0.26
D600L	60.0	160	0.14	0.21	0.28
D660L	66.0	176	0.16	0.24	0.32
D817L	81.7	218	0.20	0.30	0.40

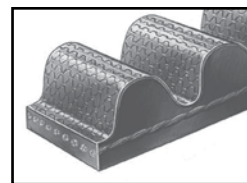
HEAVY "H" DOUBLE SIDED STANDARD 1/2" PITCH TIMING BELT

Belt Type	Pitch Length (in.)	Number of Teeth	Approx. Wt. (lbs.) 075 (3/4")	Approx. Wt. (lbs.) 100 (1")	Approx. Wt. (lbs.) 150 (1-1/2")	Approx. Wt. (lbs.) 200 (2")	Approx. Wt. (lbs.) 300 (3")
D240H	24.0	48	0.17	0.22	0.34	0.44	0.68
D270H	27.0	54	0.19	0.25	0.38	0.50	0.76
D300H	30.0	60	0.21	0.28	0.42	0.56	0.82
D330H	33.0	66	0.23	0.30	0.44	0.60	0.92
D350H	35.0	70	0.24	0.32	0.46	0.64	0.96
D360H	36.0	72	0.25	0.33	0.50	0.66	1.00
D375H	37.5	75	0.26	0.35	0.52	0.69	1.06
D390H	39.0	78	0.27	0.36	0.54	0.72	1.08
D400H	40.0	80	0.29	0.38	0.56	0.76	1.15
D420H	42.0	84	0.30	0.40	0.60	0.80	1.20
D450H	45.0	90	0.32	0.43	0.64	0.86	1.28
D480H	48.0	96	0.34	0.45	0.68	0.90	1.36
D510H	51.0	102	0.36	0.48	0.72	0.96	1.42
D540H	54.0	108	0.38	0.51	0.76	1.02	1.52
D570H	57.0	114	0.40	0.53	0.80	1.06	1.60
D600H	60.0	120	0.42	0.56	0.84	1.12	1.68
D630H	63.0	126	0.44	0.59	0.88	1.18	1.76
D660H	66.0	132	0.47	0.63	0.94	1.26	1.86
D700H	70.0	140	0.49	0.65	0.98	1.30	1.96
D725H	72.5	145	0.51	0.68	1.02	1.36	2.04
D750H	75.0	150	0.53	0.71	1.06	1.42	2.12
D800H	80.0	160	0.56	0.75	1.12	1.50	2.24
D850H	85.0	170	0.60	0.80	1.20	1.60	2.40
D900H	90.0	180	0.64	0.85	1.28	1.70	2.56
D1000H	100.0	200	0.71	0.95	1.41	1.90	2.82
D1110H	111.0	222	0.77	1.03	1.54	2.06	3.08
D1250H	125.0	250	0.89	1.19	1.78	2.38	3.56
D1400H	140.0	280	1.00	1.33	2.00	2.66	4.00
D1700H	170.0	340	1.20	1.60	2.40	3.20	4.80

HTB® HIGH TORQUE SYNCHRONOUS BELTS



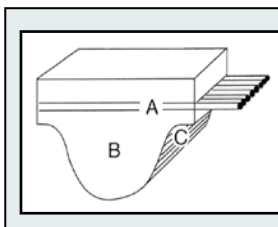
HTB® High-Torque Belts - 3M, 5M, 8M, 14M Curvilinear Tooth Profile (Oil, Heat & Abrasion Resistant)



The standard trapezoidal tooth timing belt design performs poorly in high-torque applications and high-power drives at lower speeds. To overcome this disadvantage, the High-Torque Belt (HTB®) was developed using a more efficient tooth profile.

Among the advantages are:

- Higher torque transmission at low speeds
- High power transmission over a wide speed range
- Improved meshing to reduce tooth jump
- Higher resistance to tooth shear
- Less tooth wear due to friction



- A.** A high-modulus fiberglass cord is wound across the entire width of the belt pitch line ensuring minimal stretch and resistance to repeated flexing.
- B.** The body is a synthetic chloroprene compounded to resist flex fatigue, heat, ozone, mineral lubricating oils and aging.
- C.** A tough nylon fabric is bonded to the tooth surface for wear resistance.

Stock 5mm, 8mm and 14mm pitch HTB® Synchronous Belts are listed below. Non-standard lengths in these pitches are also available, as are belts with 3mm pitch.

3M - 3mm HTB® Synchronous Belts

Many lengths are in stock and can be cut to the desired width. Additional 3mm pitch HTB® Belt sizes are available on a made-to-order basis. Please check with Jason/Megadyne for availability. HTB® Synchronous Belts are specified by belt pitch length, tooth pitch and belt width in millimeters.

Example: 720-8M-30

PART NUMBER DESIGNATION

720-8M-30

720 = Belt pitch length in millimeters = 720mm

8M = Tooth pitch in millimeters = 8mm

30 = Belt width in millimeters = 30mm

Pitch Code	Tooth Pitch (mm)	Standard Widths/Width Codes (mm)											Pitch Lengths
		9	15	20	25	30	40	50	55	85	115	170	
5M	5	09	15	-	25	-	-	-	-	-	-	-	215 thru 2525mm
8M	8	-	-	20	-	30	-	50	-	85	-	-	480 thru 4400mm
14M	14	-	-	-	-	-	40	-	55	85	115	170	966 thru 4578mm

NOTE: Widths shown are considered standard, but HTB® Synchronous Belts can be cut to any width desired.

Features & Benefits

- **Fiberglass Tensile Cord** - High dimensional stability and maximum flexibility
- **Chloroprene Belt Body** - Oil, heat and ozone resistance; high tooth shear resistance
- **Nylon Tooth Cover** - Durability and wear resistance, increased power capacity

Construction

Compound - Chloroprene

Cord - Fiberglass

Tooth Cover - Nylon

Applications - Drives requiring premium efficiency or synchronous operation and higher power capacity than trapezoidal timing belts. Used on conveyors, industrial equipment, machine tools, hand power tools and agricultural equipment where high power density is needed.

Engineering Standards - Conforms to ARPM standard IP-27

Recommended Pulleys - Use pulleys made to ARPM standards

Non-Standard Lengths - Contact Jason/Megadyne



HTB® HIGH TORQUE SYNCHRONOUS BELTS

3mm HTB® SYNCHRONOUS BELTS

Many sizes in stock. Other 3mm Pitch HTB® Belts are available on a made-to-order basis. Please check with Jason/Megadyne for availability.

5mm HTB® SYNCHRONOUS BELTS

Belt Type	Pitch Length (mm)	Number of Teeth	Approx. Wt. (lbs.) 09mm	Approx. Wt. (lbs.) 15mm	Approx. Wt. (lbs.) 25mm	Belt Type	Pitch Length (mm)	Number of Teeth	Approx. Wt. (lbs.) 09mm	Approx. Wt. (lbs.) 15mm	Approx. Wt. (lbs.) 25mm
215-5M	215	43	0.019	0.032	0.054	640-5M	640	128	0.056	0.094	0.157
225-5M	225	45	0.020	0.034	0.056	665-5M	665	133	0.058	0.097	0.160
240-5M	240	48	0.022	0.036	0.060	670-5M	670	134	0.058	0.098	0.162
265-5M	265	53	0.024	0.040	0.066	675-5M	675	135	0.059	0.099	0.164
270-5M	270	54	0.024	0.041	0.068	680-5M	680	136	0.059	0.099	0.165
300-5M	300	60	0.026	0.044	0.073	700-5M	700	140	0.061	0.102	0.170
320-5M	320	64	0.028	0.047	0.078	725-5M	725	145	0.064	0.106	0.176
325-5M	325	65	0.029	0.048	0.080	740-5M	740	148	0.066	0.108	0.179
330-5M	330	66	0.029	0.049	0.082	750-5M	750	150	0.066	0.110	0.175
345-5M	345	69	0.030	0.050	0.084	755-5M	755	151	0.066	0.111	0.184
350-5M	350	70	0.031	0.051	0.085	770-5M	770	154	0.068	0.113	0.188
355-5M	355	71	0.031	0.052	0.086	800-5M	800	160	0.070	0.117	0.194
360-5M	360	72	0.032	0.053	0.088	825-5M	825	165	0.072	0.120	0.197
370-5M	370	74	0.032	0.054	0.090	835-5M	835	167	0.073	0.121	0.201
375-5M	375	75	0.033	0.055	0.091	850-5M	850	170	0.074	0.124	0.206
400-5M	400	80	0.035	0.059	0.098	860-5M	860	172	0.075	0.126	0.210
420-5M	420	84	0.036	0.060	0.100	890-5M	890	178	0.078	0.130	0.216
425-5M	425	85	0.037	0.061	0.101	925-5M	925	185	0.081	0.135	0.224
450-5M	450	90	0.039	0.066	0.110	935-5M	935	187	0.082	0.136	0.226
460-5M	460	92	0.040	0.067	0.111	950-5M	950	190	0.083	0.138	0.229
465-5M	465	93	0.041	0.068	0.113	980-5M	980	196	0.085	0.142	0.236
475-5M	475	95	0.042	0.070	0.116	1000-5M	1000	200	0.087	0.145	0.241
500-5M	500	100	0.044	0.073	0.121	1050-5M	1050	210	0.092	0.153	0.254
525-5M	525	105	0.049	0.076	0.127	1125-5M	1125	225	0.098	0.164	0.272
535-5M	535	107	0.050	0.078	0.130	1240-5M	1240	248	0.109	0.181	0.301
550-5M	550	110	0.050	0.082	0.137	1270-5M	1270	254	0.111	0.185	0.307
565-5M	565	113	0.051	0.083	0.138	1420-5M	1420	284	0.124	0.206	0.342
575-5M	575	115	0.051	0.084	0.139	1500-5M	1500	300	0.131	0.218	0.364
580-5M	580	116	0.051	0.085	0.141	1595-5M	1595	319	0.139	0.231	0.384
600-5M	600	120	0.053	0.088	0.146	1790-5M	1790	358	0.159	0.260	0.432
610-5M	610	122	0.054	0.090	0.149	1800-5M	1800	360	0.160	0.261	0.433
615-5M	615	123	0.054	0.090	0.151	1870-5M	1870	374	0.167	0.271	0.452
625-5M	625	125	0.055	0.092	0.153	2000-5M	2000	400	0.178	0.281	0.467
635-5M	635	127	0.056	0.093	0.154	2525-5M	2525	505	0.225	0.354	0.588

8mm HTB® SYNCHRONOUS BELTS

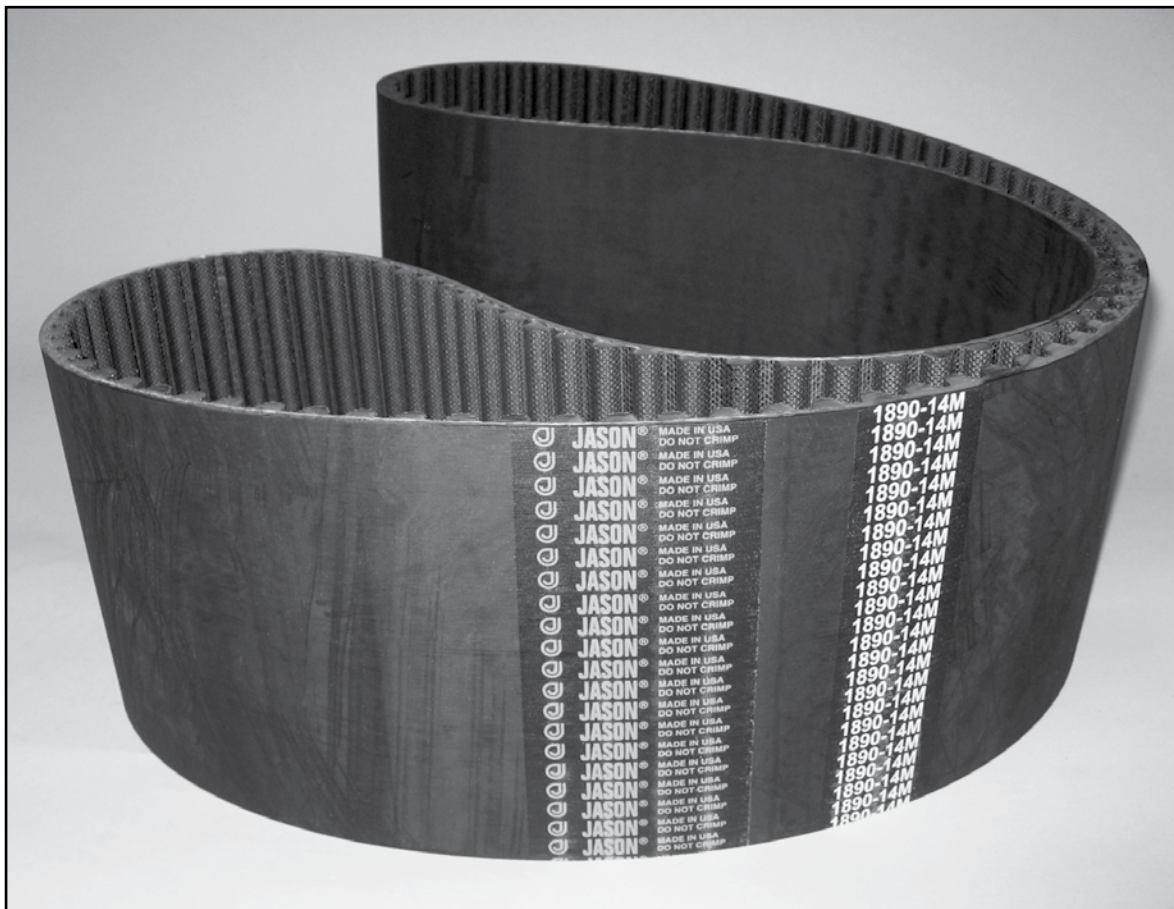
Belt Type	Pitch Length (mm)	Number of Teeth	Approx. Wt. (lbs.) 20mm	Approx. Wt. (lbs.) 30mm	Approx. Wt. (lbs.) 50mm	Approx. Wt. (lbs.) 85mm	Belt Type	Pitch Length (mm)	Number of Teeth	Approx. Wt. (lbs.) 20mm	Approx. Wt. (lbs.) 30mm	Approx. Wt. (lbs.) 50mm	Approx. Wt. (lbs.) 85mm
480-8M	480	60	0.13	0.20	0.34	0.57	1224-8M	1224	153	0.35	0.51	0.85	1.45
536-8M	536	67	0.14	0.23	0.38	0.63	1248-8M	1248	156	0.35	0.53	0.87	1.49
560-8M	560	70	0.16	0.23	0.39	0.66	1280-8M	1280	160	0.36	0.53	0.89	1.51
600-8M	600	75	0.17	0.25	0.42	0.71	1328-8M	1328	166	0.38	0.55	0.92	1.57
624-8M	624	78	0.18	0.26	0.43	0.74	1344-8M	1344	168	0.38	0.58	0.95	1.60
632-8M	632	79	0.18	0.27	0.44	0.75	1360-8M	1360	170	0.38	0.59	0.98	1.63
640-8M	640	80	0.18	0.27	0.45	0.76	1440-8M	1440	180	0.40	0.60	1.01	1.71
656-8M	656	82	0.17	0.25	0.42	0.71	1520-8M	1520	190	0.42	0.64	1.06	1.80
720-8M	720	90	0.19	0.27	0.45	0.76	1600-8M	1600	200	0.45	0.67	1.11	1.90
760-8M	760	95	0.21	0.31	0.52	0.89	1760-8M	1760	220	0.49	0.73	1.23	2.07
800-8M	800	100	0.22	0.33	0.56	0.96	1800-8M	1800	225	0.50	0.75	1.25	2.12
840-8M	840	105	0.24	0.35	0.58	0.99	2000-8M	2000	250	0.56	0.83	1.39	2.36
880-8M	880	110	0.25	0.37	0.61	1.05	2104-8M	2104	263	0.60	0.88	1.50	2.45
912-8M	912	114	0.26	0.38	0.64	1.07	2248-8M	2248	281	0.64	0.96	1.60	2.72
920-8M	920	115	0.26	0.38	0.64	1.10	2400-8M	2400	300	0.68	1.00	1.66	2.82
960-8M	960	120	0.27	0.40	0.67	1.14	2600-8M	2600	325	0.74	1.08	1.80	3.06
1040-8M	1040	130	0.29	0.43	0.74	1.24	2800-8M	2800	350	0.80	1.16	1.92	3.29
1120-8M	1120	140	0.31	0.47	0.78	1.33	3048-8M	3048	381	0.86	1.29	2.16	3.68
1152-8M	1152	144	0.34	0.50	0.84	1.46	3600-8M	3600	450	1.02	1.53	2.56	4.35
1200-8M	1200	150	0.34	0.50	0.84	1.42	4400-8M	4400	550	1.25	1.32	3.01	5.16

HTB® HIGH TORQUE SYNCHRONOUS BELTS



14mm HTB® SYNCHRONOUS BELTS

Belt Type	Pitch Length (mm)	Number of Teeth	Approx. Wt. (lbs.) 40mm	Approx Wt. (lbs.) 55mm	Approx Wt. (lbs.) 85mm	Approx. Wt. (lbs.) 115mm	Approx Wt. (lbs.) 170mm
966-14M	966	69	0.84	1.15	1.78	2.40	3.55
1190-14M	1190	85	1.02	1.42	2.20	2.98	4.39
1400-14M	1400	100	1.20	1.67	2.57	3.50	5.15
1610-14M	1610	115	1.40	1.92	2.95	4.02	5.95
1778-14M	1778	127	1.52	2.13	3.25	4.45	6.55
1890-14M	1890	135	1.62	2.26	3.49	4.73	6.95
2100-14M	2100	150	1.80	2.50	3.88	5.25	7.75
2310-14M	2310	165	2.00	2.75	4.26	5.75	8.50
2450-14M	2450	175	2.12	2.93	4.52	6.10	9.00
2590-14M	2590	185	2.25	3.10	4.78	6.45	9.55
2800-14M	2800	200	2.43	3.34	5.15	7.00	10.30
3150-14M	3150	225	2.73	3.77	5.80	7.85	11.60
3360-14M	3360	240	2.90	4.02	6.20	8.35	12.35
3500-14M	3500	250	3.00	4.19	6.45	8.75	12.90
3850-14M	3850	275	3.30	4.60	7.10	9.62	14.20
4326-14M	4326	309	3.70	5.17	8.00	10.80	15.95

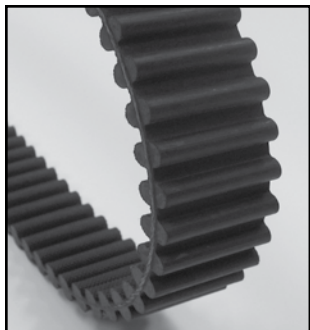


BELT SLEEVE CUTTING

Jason Industrial keeps all of our ribbed, banded and synchronous belting products in sleeve form. This allows for maximum flexibility when it comes to your urgent requests. From this sleeve stock, we can cut to conventional industry standard dimensions. Or, if you need special non-stock belt widths, we can quickly measure and execute your exact request - this can include custom branding or part numbers.



DUAL HTB[®] SYNCHRONOUS BELTS



Dual HTB[®] Synchronous Belts 5M, 8M, 14M Curvilinear Tooth Profile (Oil, Heat and Abrasion Resistant)

Dual HTB[®] belts are often used in reversing or serpentine applications.

Special widths are available: use list price for next width stock belt. Materials are same as standard HTB[®] belt, except that teeth on one side are ground from fiber reinforced chloroprene stock. Power takeoff from ground side is limited to 50% of total belt rating. Teeth with nylon cover should always be on driver pulley.

Any width available from stock, consult Jason/Megadyne for pricing.

PART NUMBER DESIGNATION

D1190-14M-55

D = Double sided tooth construction

1190 = Pitch length in millimeters

14M = Tooth pitch = 14mm

55 = Belt width in millimeters

Dual HTB[®] Belts are specified the same way as single sided HTB[®] Belts, except with a "D" prefix - **Example: D1190-14M-55**

Pitch Code	Tooth Pitch (mm)	Standard Widths/Width Codes (mm)											Pitch Lengths
		9	15	20	25	30	40	50	55	85	115	170	
D5M	5	09	15	-	25	-	-	-	-	-	-	-	400 thru 1690mm
D8M	8	-	-	20	-	30	-	50	-	85	-	-	480 thru 4400mm
D14M	14	-	-	-	-	-	40	-	55	85	115	170	1190 thru 4578mm

NOTE: Widths shown are considered standard, but Dual HTB[®] Synchronous Belts can be cut to any width desired.

Features & Benefits

- **Fiberglass Tensile Cord** - High dimensional stability and maximum flexibility
- **Chloroprene Belt Body** - Oil, heat and ozone resistance; high tooth shear resistance
- **Nylon Tooth Cover** - Durability and wear resistance, increased power capacity
- **Double Sided Teeth** - Serpentine drives, reverse rotation of driven shafts

Construction

Compound - Chloroprene

Cord - Fiberglass

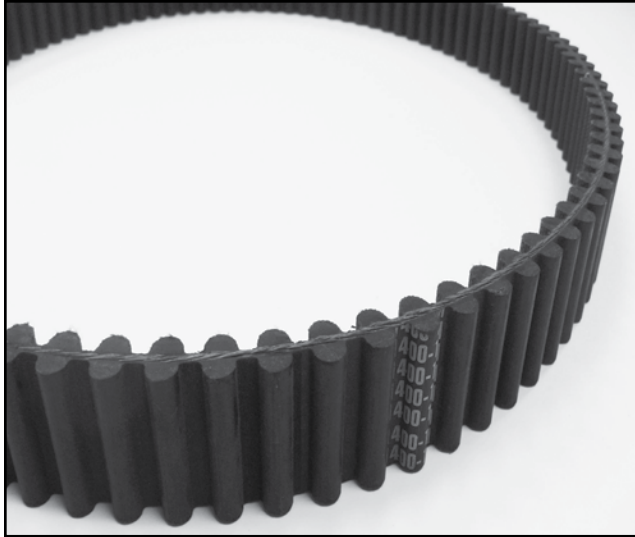
Tooth Cover - Nylon

Applications - Drives requiring premium efficiency or synchronous operation and higher power capacity than trapezoidal timing belts. Used on conveyors, industrial equipment, machine tools, hand power tools and agricultural equipment where high power density is needed.

Engineering Standards - Conforms to ARPM standard IP-27

Recommended Pulleys - Use pulleys made to ARPM standards

DUAL HTB® SYNCHRONOUS BELTS



5mm DUAL HTB® SYNCHRONOUS BELTS

Belt Type	Pitch Length (mm)	Number of Teeth	Approx. Wt. (lbs.) 09mm	Approx. Wt. (lbs.) 15mm	Approx. Wt. (lbs.) 25mm
D400-5M	400	80	0.037	0.063	0.105
D450-5M	450	90	0.042	0.071	0.118
D475-5M	475	95	0.045	0.075	0.124
D500-5M	500	100	0.047	0.078	0.128
D525-5M	525	105	0.053	0.083	0.140
D540-5M	540	108	0.054	0.086	0.142
D600-5M	600	120	0.056	0.094	0.157
D615-5M	615	123	0.058	0.097	0.161
D635-5M	635	127	0.060	0.100	0.165
D710-5M	710	142	0.066	0.110	0.183
D835-5M	835	167	0.078	0.129	0.215
D925-5M	925	185	0.087	0.144	0.240
D1420-5M	1420	284	0.133	0.220	0.366
D1595-5M	1595	319	0.148	0.247	0.411
D1690-5M	1690	338	0.157	0.262	0.436

8mm DUAL HTB® SYNCHRONOUS BELTS

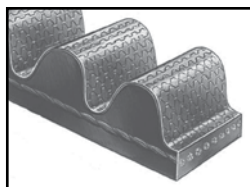
Belt Type	Pitch Length (mm)	Number of Teeth	Approx. Wt. (lbs.) 20mm	Approx. Wt. (lbs.) 30mm	Approx. Wt. (lbs.) 50mm	Approx. Wt. (lbs.) 85mm	Belt Type	Pitch Length (mm)	Number of Teeth	Approx. Wt. (lbs.) 20mm	Approx. Wt. (lbs.) 30mm	Approx. Wt. (lbs.) 50mm	Approx. Wt. (lbs.) 85mm
D480-8M	480	60	0.14	0.22	0.36	0.61	D1200-8M	1200	150	0.35	0.53	0.90	1.50
D536-8M	536	67	0.15	0.25	0.41	0.67	D1224-8M	1224	153	0.37	0.55	0.93	1.58
D560-8M	560	70	0.17	0.26	0.42	0.70	D1280-8M	1280	160	0.39	0.58	0.95	1.61
D600-8M	600	75	0.18	0.27	0.45	0.76	D1440-8M	1440	180	0.43	0.64	1.08	1.82
D632-8M	632	79	0.19	0.29	0.47	0.80	D1600-8M	1600	200	0.48	0.71	1.19	2.03
D640-8M	640	80	0.20	0.30	0.48	0.82	D1760-8M	1760	220	0.52	0.77	1.31	2.20
D720-8M	720	90	0.21	0.32	0.54	0.91	D1800-8M	1800	225	0.54	0.80	1.34	2.29
D800-8M	800	100	0.23	0.35	0.60	1.03	D2000-8M	2000	250	0.60	0.88	1.49	2.52
D840-8M	840	105	0.25	0.37	0.62	1.06	D2104-8M	2104	263	0.63	0.95	1.57	2.67
D880-8M	880	110	0.27	0.39	0.65	1.12	D2400-8M	2400	300	0.72	1.07	1.76	3.02
D920-8M	920	115	0.28	0.40	0.68	1.17	D2600-8M	2600	325	0.79	1.15	1.92	3.27
D960-8M	960	120	0.29	0.43	0.71	1.22	D2800-8M	2800	350	0.85	1.22	2.06	3.52
D1040-8M	1040	130	0.31	0.46	0.79	1.32	D3048-8M	3048	381	0.93	1.38	2.31	3.93
D1120-8M	1120	140	0.33	0.50	0.83	1.00	D3600-8M	3600	450	1.10	1.65	2.76	4.69
D1152-8M	1152	144	0.34	0.52	0.87	1.47	D4400-8M	4400	550	1.35	1.39	3.22	5.52

14mm DUAL HTB® SYNCHRONOUS BELTS

Belt Type	Pitch Length (mm)	Number of Teeth	Approx. Wt. (lbs.) 40mm	Approx. Wt. (lbs.) 55mm	Approx. Wt. (lbs.) 85mm	Approx. Wt. (lbs.) 115mm	Approx. Wt. (lbs.) 170mm
D1190-14M	1190	85	1.12	1.56	2.42	3.28	4.83
D1400-14M	1400	100	1.32	1.84	2.83	3.85	5.67
D1610-14M	1610	115	1.54	2.11	3.25	4.42	6.55
D1778-14M	1778	127	1.67	2.34	3.58	4.90	7.21
D1890-14M	1890	135	1.78	2.48	3.84	5.20	7.65
D2100-14M	2100	150	1.98	2.75	4.27	5.78	8.53
D2310-14M	2310	165	2.20	3.03	4.69	6.33	9.35
D2450-14M	2450	175	2.33	3.22	4.97	6.71	9.90
D2590-14M	2590	185	2.48	3.41	5.26	7.10	10.51
D2800-14M	2800	200	2.67	3.67	5.67	7.70	11.33
D3150-14M	3150	225	3.00	4.15	6.38	8.64	12.76
D3360-14M	3360	240	3.19	4.42	6.82	9.19	13.59
D3500-14M	3500	250	3.30	4.61	7.10	9.63	14.19
D3850-14M	3850	275	3.63	5.06	7.81	10.58	15.62
D4326-14M	4326	309	4.07	5.69	8.80	11.88	17.55
D4578-14M	4578	327	4.31	6.03	9.30	12.54	18.59



ISORAN[®] SYNCHRONOUS BELTS



Tiger Synchronous Belts - 8M, 14M Curvilinear Tooth Profile Maximum Performance HTB[®]

Jason/Megadyne developed Tiger HTB[®] to extend the HTB[®] synchronous belt application range. Special aramid reinforced rubber compound, along with improved heavy nylon tooth cover and fiberglass tensile members provide the muscle for the increased horsepower ratings; up to three times the standard HTB[®] belts.

PART NUMBER DESIGNATION

480-8MT-12

480 = Pitch length in millimeters

8M = Tooth pitch = 14mm

T = Tiger - high torque construction

12 = Belt width in millimeters

Tiger Belts[®] may also be ordered in the standard 8mm pitch HTB[®] widths of 20mm, 30mm, 50mm and 85mm, as well as the standard 14mm pitch HTB[®] widths of 40mm, 55mm, 85mm, 115mm and 170mm.

HTB[®] belts are specified by belt pitch length, tooth pitch and belt width in millimeters - **Example: 480-8MT-12**

Pitch Code	Tooth Pitch (mm)	Standard Widths/Width Codes (mm)																Pitch Lengths
		12	20	22	30	35	40	42	50	55	60	65	85	90	115	120	170	
8MT	8	12	20	22	30	35	-	-	50	-	60	-	85	-	-	-	-	480 thru 4400mm
14MT	14	-	20	-	-	-	40	42	-	55	-	65	85	90	115	120	170	966 thru 4578mm

NOTE: Widths shown are considered standard, but all Tiger HTB[®] can be cut to any width desired.

Features & Benefits

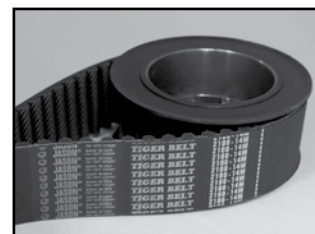
- **Fiberglass Tensile Cord** - Excellent dimensional stability and high power capacity
- **Chloroprene Rubber Compound with Aramid Reinforcement** - Superior power capacity, oil and heat resistance
- **Heavy Nylon Tooth Cover** - Smooth operation, high power capacity, longer life
- **HTB[®] Tooth Profile** - Uses upgraded industrial pulleys with either HTD[®] or RPP[®] profile

Construction

Compound - Chloroprene + Aramid reinforcement

Cord - Fiberglass

Tooth Cover - Heavy Nylon



Applications - Drives requiring premium efficiency or synchronous operation and higher power capacity than HTB[®] belts. Used on conveyors, industrial equipment, machine tools, hand power tools and agricultural equipment where high power density is needed.

Engineering Standards - Conforms to ARPM standard IP-27

Recommended Pulleys - Use pulleys made to ARPM standards

Non-Standard Lengths - Contact Jason/Megadyne

8MT TIGER SYNCHRONOUS BELTS*

Belt Type	Pitch Length (mm)	Number of Teeth	Belt Type	Pitch Length (mm)	Number of Teeth
480-8MT	480	60	1200-8MT	1200	150
536-8MT	536	67	1224-8MT	1224	153
560-8MT	560	70	1280-8MT	1280	160
600-8MT	600	75	1440-8MT	1440	180
632-8MT	632	79	1600-8MT	1600	200
640-8MT	640	80	1760-8MT	1760	220
720-8MT	720	90	1800-8MT	1800	225
800-8MT	800	100	2000-8MT	2000	250
840-8MT	840	105	2400-8MT	2400	300
880-8MT	880	110	2600-8MT	2600	325
1040-8MT	1040	130	2800-8MT	2800	350
1104-8MT	1104	138	4400-8MT	4400	550
1120-8MT	1120	140			
1152-8MT	1152	144			

14MT TIGER SYNCHRONOUS BELTS*

Belt Type	Pitch Length (mm)	Number of Teeth	Belt Type	Pitch Length (mm)	Number of Teeth
966-14MT	966	69	2590-14MT	2590	185
1190-14MT	1190	85	2800-14MT	2800	200
1400-14MT	1400	100	3150-14MT	3150	225
1610-14MT	1610	115	3360-14MT	3360	240
1778-14MT	1778	127	3500-14MT	3500	250
1890-14MT	1890	135	3850-14MT	3850	275
2100-14MT	2100	150	4326-14MT	4326	309
2310-14MT	2310	165	4578-14MT	4578	327
2450-14MT	2450	175			

*Most Tiger 8MT & 14MT sizes not available from stock and can be made to order. Please contact Jason/Megadyne customer service for more information.

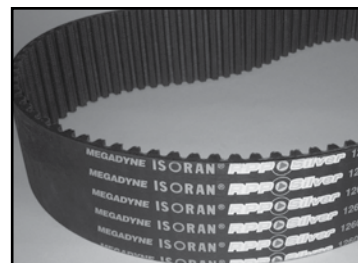
ISORAN[®] SYNCHRONOUS BELTS



RPP[®] Silver Synchronous Belts - 5M, 8M & 14M Parabolic Tooth Profile

The new Isoran[®] RPP[®] Silver Synchronous Belt is constructed with the highest quality materials. The bonded strength of all components guarantees superior torque capacity. The new materials join forces to achieve the highest standard of quality and performance in the industry.

Isoran[®] RPP[®] Silver Synchronous Belts are specified by pitch length, tooth pitch and belt width in millimeters - **Example: 1800-8MS-50**



Pitch Code	Tooth Pitch (mm)	Standard Widths/Width Codes (mm)								Pitch Lengths
		20	30	40	50	55	85	115	170	
5MS	5	Contact Jason for 5M pitch								180 thru 2525mm
8MS	8	20	30	-	50	-	85	-	-	288 thru 4400mm
14MS	14	-	-	40	-	55	85	115	170	966 thru 4578mm

NOTE: Widths shown are considered standard, but RPP[®] Silver can be cut to any width desired.

Features & Benefits

- **Increased Load Capacity** - Up to 10% over standard RPP[®] constructions
- **Drive Upgrade** - Increase drive capacity with existing pulleys
- **RPP[®] Tooth Profile** - Reinforced Parabolic Profile - interchangeable with HTD[®], HTB[®] and competitors RPP[®] belt profiles
- **Reduced Noise** - Quiet operation - RPP[®] is recognized as quietest system on the market
- **Anti-Static Properties** - Conforms to BS 2050 standard

Construction

Compound - Chloroprene

Cord - Fiberglass

Tooth Cover - Nylon



Applications - Drives requiring increased efficiency or synchronous operation and higher power capacity than standard RPP[®] synchronous belts. General industry, conveyors, industrial equipment, machine tools, hand power tools, etc.

Engineering Standards - Conforms to ARPM IP-27 and ISO 13050 standards

Recommended Pulleys - Use pulleys made to ARPM or ISO 13050 standards

ISORAN[®] RPP[®] SILVER 8M SYNCHRONOUS BELTS

Belt Type	Pitch Length (mm)	Number of Teeth	Belt Type	Pitch Length (mm)	Number of Teeth
288-8MS	288	36	1040-8MS	1040	130
320-8MS	320	40	1080-8MS	1080	135
352-8MS	352	44	1120-8MS	1120	140
360-8MS	360	45	1200-8MS	1200	150
384-8MS	384	48	1224-8MS	1224	153
408-8MS	408	51	1280-8MS	1280	160
416-8MS	416	52	1352-8MS	1352	169
456-8MS	456	57	1424-8MS	1424	178
480-8MS	480	60	1440-8MS	1440	180
536-8MS	536	67	1464-8MS	1464	183
544-8MS	544	68	1600-8MS	1600	200
560-8MS	560	70	1680-8MS	1680	210
600-8MS	600	75	1760-8MS	1760	220
608-8MS	608	76	1800-8MS	1800	225
632-8MS	632	79	1904-8MS	1904	238
640-8MS	640	80	2000-8MS	2000	250
680-8MS	680	85	2200-8MS	2200	275
720-8MS	720	90	2272-8MS	2272	284
760-8MS	760	95	2400-8MS	2400	300
800-8MS	800	100	2520-8MS	2520	315
840-8MS	840	105	2600-8MS	2600	325
880-8MS	880	110	2800-8MS	2800	350
896-8MS	896	112	3048-8MS	3048	381
920-8MS	920	115	3280-8MS	3280	410
960-8MS	960	120	3600-8MS	3600	450
1000-8MS	1000	125	4400-8MS	4400	550

ISORAN[®] RPP[®] SILVER 14M SYNCHRONOUS BELTS

Belt Type	Pitch Length (mm)	Number of Teeth	Belt Type	Pitch Length (mm)	Number of Teeth
966-14MS	966	69	1960-14MS	1960	140
994-14MS	994	71	2100-14MS	2100	150
1092-14MS	1092	78	2240-14MS	2240	160
1106-14MS	1106	79	2310-14MS	2310	165
1190-14MS	1190	85	2380-14MS	2380	170
1260-14MS	1260	90	2450-14MS	2450	175
1288-14MS	1288	92	2590-14MS	2590	185
1344-14MS	1344	96	2660-14MS	2660	190
1400-14MS	1400	100	2800-14MS	2800	200
1442-14MS	1442	103	2968-14MS	2968	212
1568-14MS	1568	112	3150-14MS	3150	225
1610-14MS	1610	115	3360-14MS	3360	240
1750-14MS	1750	125	3500-14MS	3500	250
1764-14MS	1764	126	3850-14MS	3850	275
1778-14MS	1778	127	3920-14MS	3920	280
1848-14MS	1848	132	4326-14MS	4326	309
1890-14MS	1890	135	4578-14MS	4578	327
1904-14MS	1904	136	4956-14MS	4956	354

ISORAN[®] RPP SILVER 5M SYNCHRONOUS BELTS

Contact Jason for availability of RPP Silver 5M



ISORAN® SYNCHRONOUS BELTS



RPP® Gold Synchronous Belts - 8M, 14M Parabolic Tooth Profile

Isoran® RPP® Gold is the result of Jason Megadyne's continued focus on developing high-performance drive systems to obtain new application opportunities against alternative systems such as gears and chain. Our systems take advantage of belt features such as lower weight, quieter running and reduced maintenance costs.

The Isoran® Gold belt system can be used in a virtually limitless range of industrial applications where a high-torque synchronous drive is required.

Isoran® RPP® Gold Synchronous Belts are specified by pitch length, tooth pitch and belt width in millimeters - **Example: 1800-8MG-50**

PART NUMBER DESIGNATION

1800-8MG-50

1800 = Pitch length in millimeters

8M = Tooth pitch = 8mm

G = Gold - extra high torque RPP construction

50 = Belt width in millimeters

Pitch Code	Tooth Pitch (mm)	Standard Widths/Width Codes (mm)								Pitch Lengths
		20	30	40	50	55	85	115	170	
8MG	8	20	30	-	50	-	85	-	-	288 thru 4400mm
14MG	14	-	-	40	-	55	85	115	170	966 thru 4956mm

NOTE: Widths shown are considered standard, but all RPP® Gold can be cut to any width desired.

Features & Benefits

- **Hi-Performance Fiberglass Tensile Cord** - Excellent dimensional stability. Higher power capability
- **Special Hi-Performance Rubber** - Increased power capacity; oil and heat resistance
- **Double Nylon Tooth Cover** - Graphite impregnated for low friction and long wear
- **RPP® Tooth Profile** - Reinforced Parabolic Profile - interchangeable with HTD®, HTB® and competitors RPP® belt profiles
- **Reduced Noise** - Quiet operation - RPP® is recognized as quietest system on the market
- **Anti-Static Properties** - Conforms to BS 2050 standard

Construction

Compound - Hi-Performance Chloroprene

Cord - Hi-Performance Fiberglass

Tooth Cover - Double Layer Nylon, Graphite Impregnated



Applications - Drives requiring increased efficiency or synchronous operation and higher power capacity than standard RPP® Silver synchronous belts. General industry, conveyors, industrial equipment, machine and hand power tools, etc.

Engineering Standards - Conforms to ARPM IP-27 and ISO 13050 standards

Recommended Pulleys - Use pulleys made to ARPM or ISO 13050 standards

Special Widths - RPP® Gold can be supplied in any width - available upon request

Special Constructions - RPP® Gold available in 5mm pitch construction, as well as Double-Sided construction - upon request

ISORAN® RPP GOLD 8M SYNCHRONOUS BELTS

Belt Type	Pitch Length (mm)	Number of Teeth	Belt Type	Pitch Length (mm)	Number of Teeth	Belt Type	Pitch Length (mm)	Number of Teeth	Belt Type	Pitch Length (mm)	Number of Teeth
288-8MG	288	36	608-8MG	608	76	1040-8MG	1040	130	1800-8MG	1800	225
320-8MG	320	40	632-8MG	632	79	1080-8MG	1080	135	1904-8MG	1904	238
352-8MG	352	44	640-8MG	640	80	1120-8MG	1120	140	2000-8MG	2000	250
360-8MG	360	45	680-8MG	680	85	1200-8MG	1200	150	2200-8MG	2200	275
384-8MG	384	48	720-8MG	720	90	1224-8MG	1224	153	2272-8MG	2272	284
408-8MG	408	51	760-8MG	760	95	1280-8MG	1280	160	2400-8MG	2400	300
416-8MG	416	52	800-8MG	800	100	1352-8MG	1352	169	2520-8MG	2520	315
456-8MG	456	57	840-8MG	840	105	1424-8MG	1424	178	2600-8MG	2600	325
480-8MG	480	60	880-8MG	880	110	1440-8MG	1440	180	2800-8MG	2800	350
536-8MG	536	67	896-8MG	896	112	1464-8MG	1464	183	3048-8MG	3048	381
544-8MG	544	68	920-8MG	920	115	1600-8MG	1600	200	3280-8MG	3280	410
560-8MG	560	70	960-8MG	960	120	1680-8MG	1680	210	3600-8MG	3600	450
600-8MG	600	75	1000-8MG	1000	125	1760-8MG	1760	220	4400-8MG	4400	550

ISORAN® RPP GOLD 14M SYNCHRONOUS BELTS

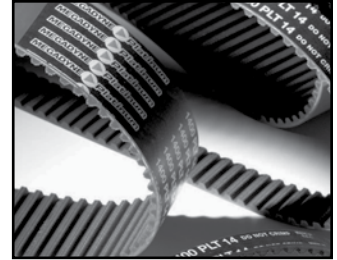
966-14MG	966	69	1442-14MG	1442	103	1960-14MG	1960	140	2968-14MG	2968	212
994-14MG	994	71	1568-14MG	1568	112	2100-14MG	2100	150	3150-14MG	3150	225
1092-14MG	1092	78	1610-14MG	1610	115	2240-14MG	2240	160	3360-14MG	3360	240
1106-14MG	1106	79	1750-14MG	1750	125	2310-14MG	2310	165	3500-14MG	3500	250
1190-14MG	1190	85	1764-14MG	1764	126	2380-14MG	2380	170	3850-14MG	3850	275
1260-14MG	1260	90	1778-14MG	1778	127	2450-14MG	2450	175	3920-14MG	3920	280
1288-14MG	1288	92	1848-14MG	1848	132	2590-14MG	2590	185	4326-14MG	4326	309
1344-14MG	1344	96	1890-14MG	1890	135	2660-14MG	2660	190	4578-14MG	4578	327
1400-14MG	1400	100	1904-14MG	1904	136	2800-14MG	2800	200	4956-14MG	4956	354

ISORAN® SYNCHRONOUS BELTS



Platinum The Next Generation Synchronous Belt - 8M, 14M Parabolic RPC Tooth Profile

PLATINUM is an Ultra-High Performance, rubber-based synchronous belt. "Dual Core" Hybrid Tensile Cord Technology, combined with a nitrile-based HNBR compound body, results in a product capable of handling the most demanding high-power, high-torque drives. Designed to replace drives using roller chains and gears, and as an alternative to Poly Chain®, PLATINUM permits a high-power capacity drive with excellent dimensional stability and a fully-functional interchange with all of the most common deep pulley tooth profile systems currently in use.



With PLATINUM, Jason/Megadyne introduces a revolutionary new "RPC" belt tooth profile. An evolution of the industry standard RPP®, the new "RPC" belt tooth profile is fully interchangeable with HTD®, RPP® and Poly Chain® pulley tooth profiles. The RPC belt tooth profile allows existing drive systems (RPP®, HTD®, Poly Chain® and PowerGrip® GT® 2) to be upgraded without replacing the pulleys. PLATINUM is a true "drop-in" replacement on all commonly used pulley profiles. RPC PLATINUM synchronous belts are specified by belt pitch length, tooth pitch and belt width in millimeters - **Example: 3500PLT14M65**

Pitch Code	Tooth Pitch (mm)	Standard Widths/Width Codes (mm)									Pitch Lengths
		12	20	22	35	42	60	65	90	120	
PLT8M	8	12	-	22	35	-	60	-	-	-	248 thru 440mm
PLT14M	14	-	20	-	-	42	-	65	90	120	994 thru 4410mm

NOTE: Widths shown are considered standard, but Platinum can be cut to any width desired.



PART NUMBER DESIGNATION

3500PLT14M65

3500 = Pitch length in millimeters

PLT = Platinum - extra high torque RPC construction

14M = Tooth pitch = 14mm

65 = Belt width in millimeters

Features & Benefits

- **RPC Tooth Profile** - Compatible with Poly Chain®, RPP®, HTD® and PowerGrip® GT® 2 pulleys
- **Highest Power Capacity** - Reduced belt and pulley width produce less noise, reduces drive weight, bearing load and cost, with increased efficiency and energy savings
- **Dual Core Hybrid Tensile Cord** - Guarantees high power capability and maintenance-free operation
- **Available in Any Width** - Unlimited width possibilities. Jason/Megadyne will cut to desired width
- **Greater Length Range** - Over 70 different lengths available - more than any competitor
- **Lower Noise** - HNBR Rubber based technology is quieter than polyurethane belt
- **High Temperature Capability** - Up to 239°F versus 185°F for polyurethane
- **HNBR Rubber Construction** - Better flexibility than polyurethane belts. Important for drives with idlers

Construction

Compound - HNBR with high resistance to petroleum oils and solvents

Tensile Cord - Dual Core Hybrid

Tooth Cover - Specially treated nylon fabric to reduce friction and pulley wear

Applications - Drives requiring maximum efficiency or synchronous operation and highest power capacity. General industry, conveyors, industrial equipment, machine tools, hand power tools, etc.

Engineering Standards - Conforms to ARPM IP-27 and ISO 13050 standard tolerances

Recommended Pulleys - Use pulleys made to ARPM or ISO 13050 standards

Special Widths - PLATINUM can be supplied in any width - available upon request

Silicone-Free Construction - individually packaged - non-stock, made to order



ISORAN® SYNCHRONOUS BELTS

PLATINUM SYNCHRONOUS BELTS - 8M

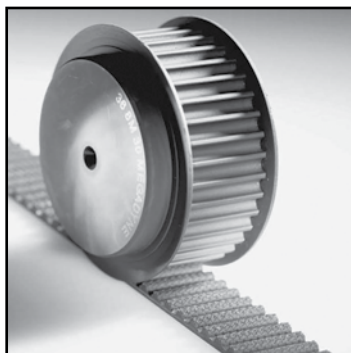
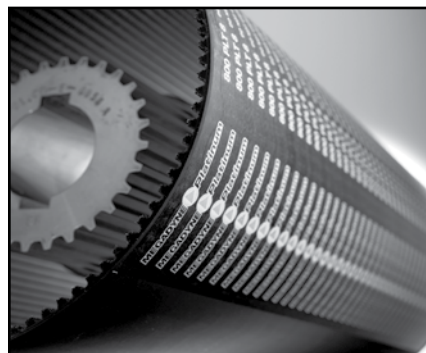
Belt Type	Pitch Length (mm)	Number of Teeth	Belt Type	Pitch Length (mm)	Number of Teeth	Belt Type	Pitch Length (mm)	Number of Teeth	Belt Type	Pitch Length (mm)	Number of Teeth
248PLT8	248	31	800PLT8	800	100	1280PLT8	1280	160	2600PLT8	2600	325
288PLT8	288	36	840PLT8	840	105	1440PLT8	1440	180	2800PLT8	2800	350
352PLT8	352	44	880PLT8	880	110	1600PLT8	1600	200	2840PLT8	2840	355
416PLT8	416	52	896PLT8	896	112	1760PLT8	1760	220	3048PLT8	3048	381
456PLT8	456	57	960PLT8	960	120	1792PLT8	1792	224	3200PLT8	3200	400
480PLT8	480	60	1000PLT8	1000	125	1800PLT8	1800	225	3280PLT8	3280	410
544PLT8	544	68	1040PLT8	1040	130	2000PLT8	2000	250	3600PLT8	3600	450
560PLT8	560	70	1080PLT8	1080	135	2200PLT8	2200	275	4000PLT8	4000	500
608PLT8	608	76	1120PLT8	1120	140	2240PLT8	2240	280	4400PLT8	4400	550
640PLT8	640	80	1200PLT8	1200	150	2400PLT8	2400	300			
720PLT8	720	90	1224PLT8	1224	153	2520PLT8	2520	315			

PLATINUM SYNCHRONOUS BELTS - 14M

Belt Type	Pitch Length (mm)	Number of Teeth	Belt Type	Pitch Length (mm)	Number of Teeth	Belt Type	Pitch Length (mm)	Number of Teeth	Belt Type	Pitch Length (mm)	Number of Teeth
994PLT14	994	71	1610PLT14	1610	115	2380PLT14	2380	170	3304PLT14	3304	236
1092PLT14	1092	78	1750PLT14	1750	125	2450PLT14	2450	175	3360PLT14	3360	240
1120PLT14	1120	80	1778PLT14	1778	127	2520PLT14	2520	180	3500PLT14	3500	250
1190PLT14	1190	85	1890PLT14	1890	140	2590PLT14	2590	185	3850PLT14	3850	275
1260PLT14	1260	90	1960PLT14	1960	115	2660PLT14	2660	190	3920PLT14	3920	280
1288PLT14	1288	92	2100PLT14	2100	150	2800PLT14	2800	200	4326PLT14	4326	309
1400PLT14	1400	100	2240PLT14	2240	160	3136PLT14	3136	224	4410PLT14	4410	315
1568PLT14	1568	112	2310PLT14	2310	165	3150PLT14	3150	225	4956PLT14	4956	354



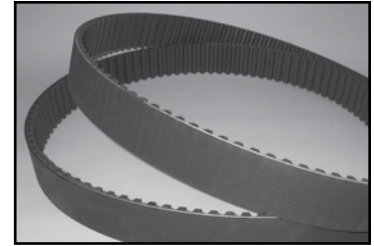
AVAILABLE FROM STOCK!
The New DTM-MICRO
Tension Measuring Device



ISORAN® SYNCHRONOUS BELTS



RPP® MEGAPAINTE Synchronous Belts - 8M Parabolic Tooth Profile (Silicone & Contaminant Free)



Jason/Megadyne has developed a new RPP® 8M synchronous belt designed for conveyor and transfer lines, specifically for painting systems.

Silicone prevents paint from adhering and is prohibited in paint areas. Water and solvent-based paints require belts that are silicone and contaminant free. MEGAPAINTE Belts meet both of these requirements. The purity of materials and the absence of contaminating particles from MEGAPAINTE guarantee painted surfaces are always perfect and defect-free. MEGAPAINTE Belts are specially packaged to remain silicone-free and contaminate-free until ready for use.

MEGAPAINTE is available made-to-order in the entire 8mm pitch length range, minimum order quantities apply. Special protective packaging guarantees complete surface purity from manufacturing to installation.

NOTE: Power ratings for MEGAPAINTE 8M are equivalent to RPP® Silver 8M belts.

Isoran® RPP® MEGAPAINTE Synchronous Belts are specified by belt pitch length, tooth pitch and belt width in millimeters - **Example: 1600-RPP8M-50PNT**

PART NUMBER DESIGNATION

1600-RPP8M-50PNT

1600 = Pitch length in millimeters

RPP8M = RPP® tooth profile - 8mm pitch

50 = Belt width (mm)

PNT = Silicone and contaminant free construction and packaging

Pitch Code	Tooth Pitch (mm)	Standard Widths/ Width Codes (mm)				Pitch Lengths
		20	30	50	85	
PNT8	8	20	30	50	85	288 thru 4400mm

NOTE: Widths shown are considered standard, but RPP® MEGAPAINTE can be cut to any width desired.

Features & Benefits

- **Silicone, Impurity & Contaminant Free** - Meets criteria set forth by Forschungsinstitut für Pigmente und Lacke e.V. of the Stuttgart University
- **High Purity NBR Compound** - Guarantees no contamination by belt
- **RPP Tooth Profile** - Complete interchangeability on 8M RPP® and HTD® pulleys

Construction

Compound - Contaminant Free NBR

Cord - Fiberglass

Tooth Cover - Nylon, with nitrile based treatment

Applications - Applications requiring silicone-free construction. Often used on conveyor and transfer line drives, specifically for painting systems

Availability - Made-to-Order, Non-Stock

Engineering Standards - Conforms to ARPM standard IP-27, ISO 13050

Recommended Pulleys - Use pulleys made to ARPM or ISO 13050 standards

Special Widths - RPP® MEGAPAINTE can be supplied in any width - available upon request

RPP® MEGAPAINTE SYNCHRONOUS BELTS - 8M

Belt Type	Pitch Length (mm)	Number of Teeth	Belt Type	Pitch Length (mm)	Number of Teeth	Belt Type	Pitch Length (mm)	Number of Teeth	Belt Type	Pitch Length (mm)	Number of Teeth
288-RPP8M-	288	36	608-RPP8M-	608	76	1040-RPP8M-	1040	130	1800-RPP8M-	1800	225
320-RPP8M-	320	40	632-RPP8M-	632	79	1080-RPP8M-	1080	135	1904-RPP8M-	1904	238
352-RPP8M-	352	44	640-RPP8M-	640	80	1120-RPP8M-	1120	140	2000-RPP8M-	2000	250
360-RPP8M-	360	45	680-RPP8M-	680	85	1200-RPP8M-	1200	150	2200-RPP8M-	2200	275
384-RPP8M-	384	48	720-RPP8M-	720	90	1224-RPP8M-	1224	153	2272-RPP8M-	2272	284
408-RPP8M-	408	51	760-RPP8M-	760	95	1280-RPP8M-	1280	160	2400-RPP8M-	2400	300
416-RPP8M-	416	52	800-RPP8M-	800	100	1352-RPP8M-	1352	169	2520-RPP8M-	2520	315
456-RPP8M-	456	57	840-RPP8M-	840	105	1424-RPP8M-	1424	178	2600-RPP8M-	2600	325
480-RPP8M-	480	60	880-RPP8M-	880	110	1440-RPP8M-	1440	180	2800-RPP8M-	2800	350
536-RPP8M-	536	67	896-RPP8M-	896	112	1464-RPP8M-	1464	183	3048-RPP8M-	3048	381
544-RPP8M-	544	68	920-RPP8M-	920	115	1600-RPP8M-	1600	200	3280-RPP8M-	3280	410
560-RPP8M-	560	70	960-RPP8M-	960	120	1680-RPP8M-	1680	210	3600-RPP8M-	3600	450
600-RPP8M-	600	75	1000-RPP8M-	1000	125	1760-RPP8M-	1760	220	4400-RPP8M-	4400	550